

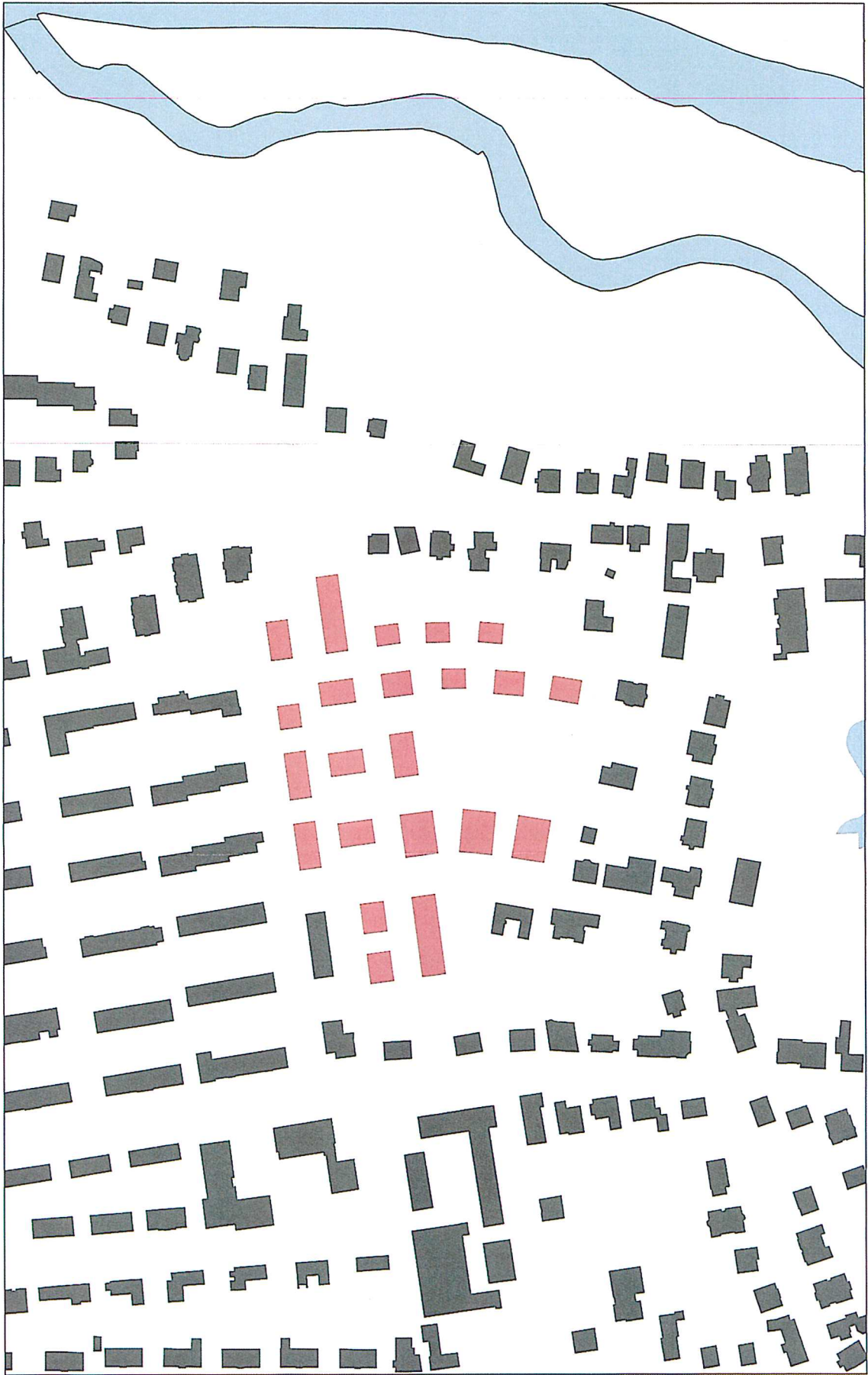
Entwicklung der städtischen Flächen  
im Bereich Theresenstraße, Neustadt am Rübenberge

- ENTWURF -  
25.04.2012





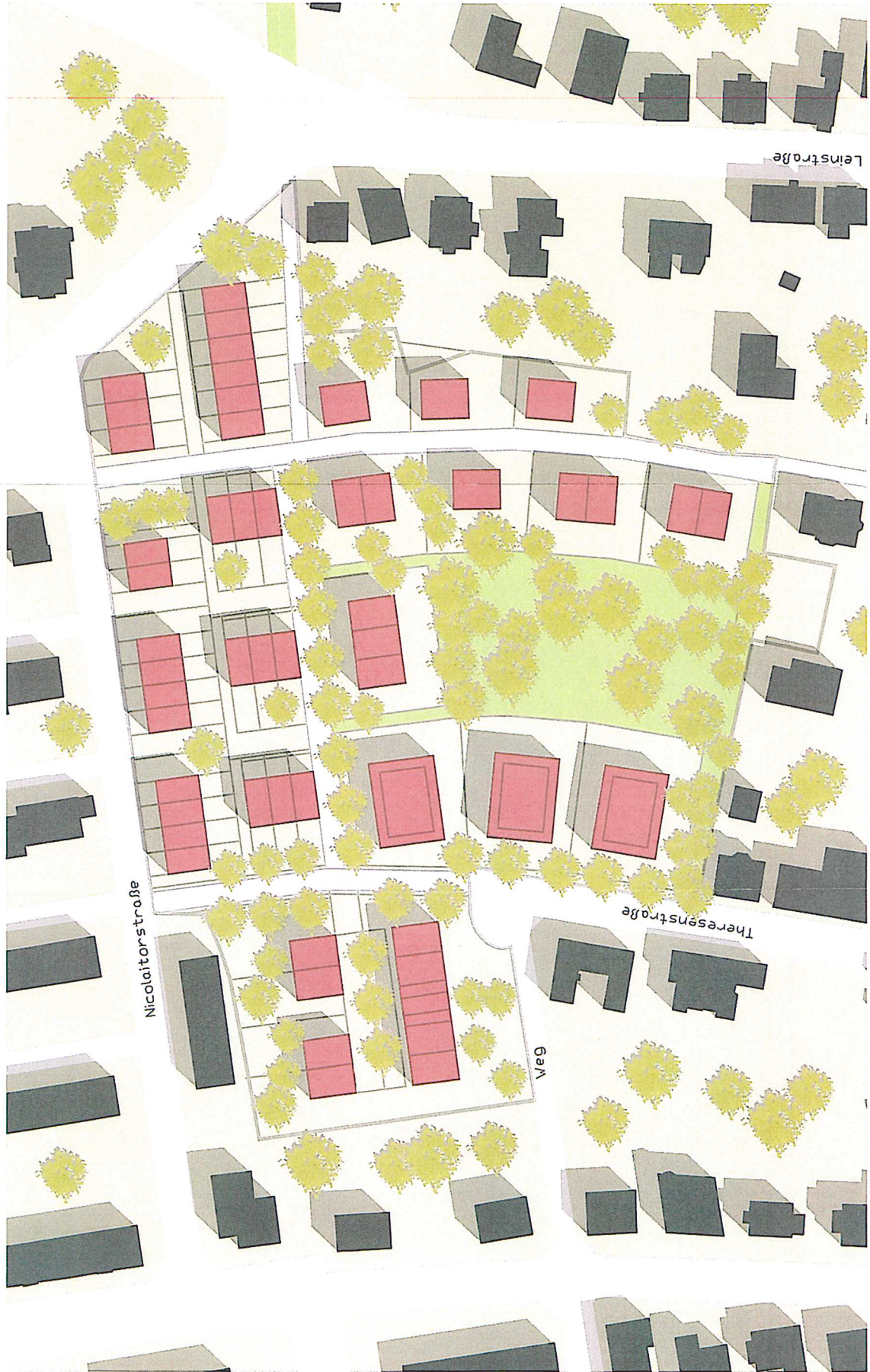
BLOCKSTRUKTUR M 1:2000



STÄDTEBAULICHE KÖRNING



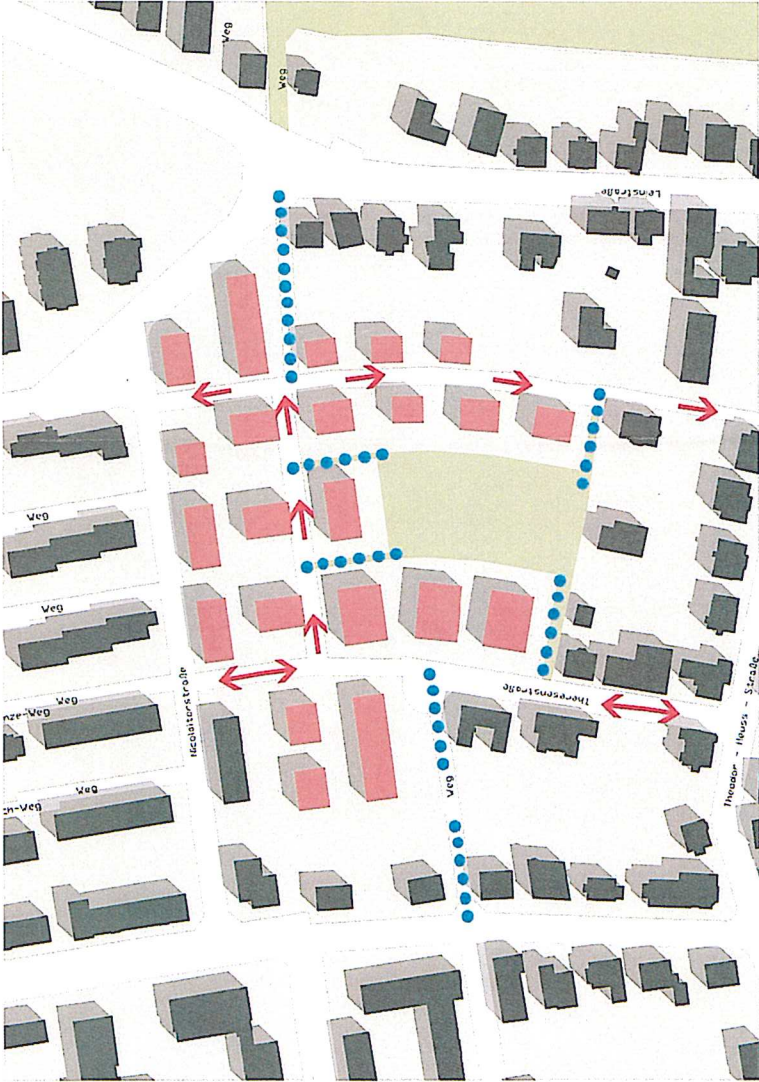
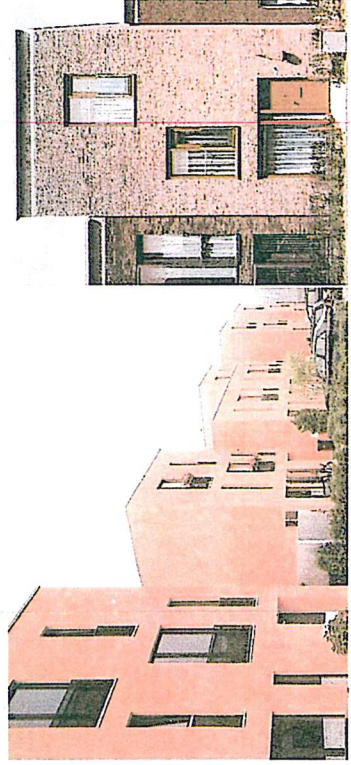
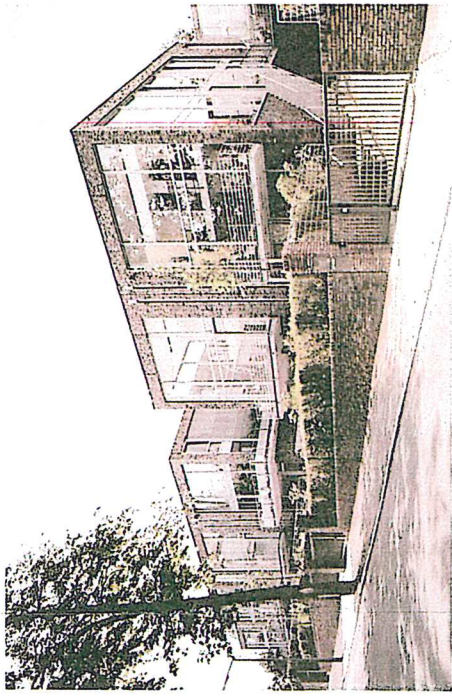
ENTWURF M 1:2000



ENTWURF M 1:1000



BAUMSTANDORTE M 1:1000



**ERSCHLIESSUNG PKW UND FUSSGÄNGER**

