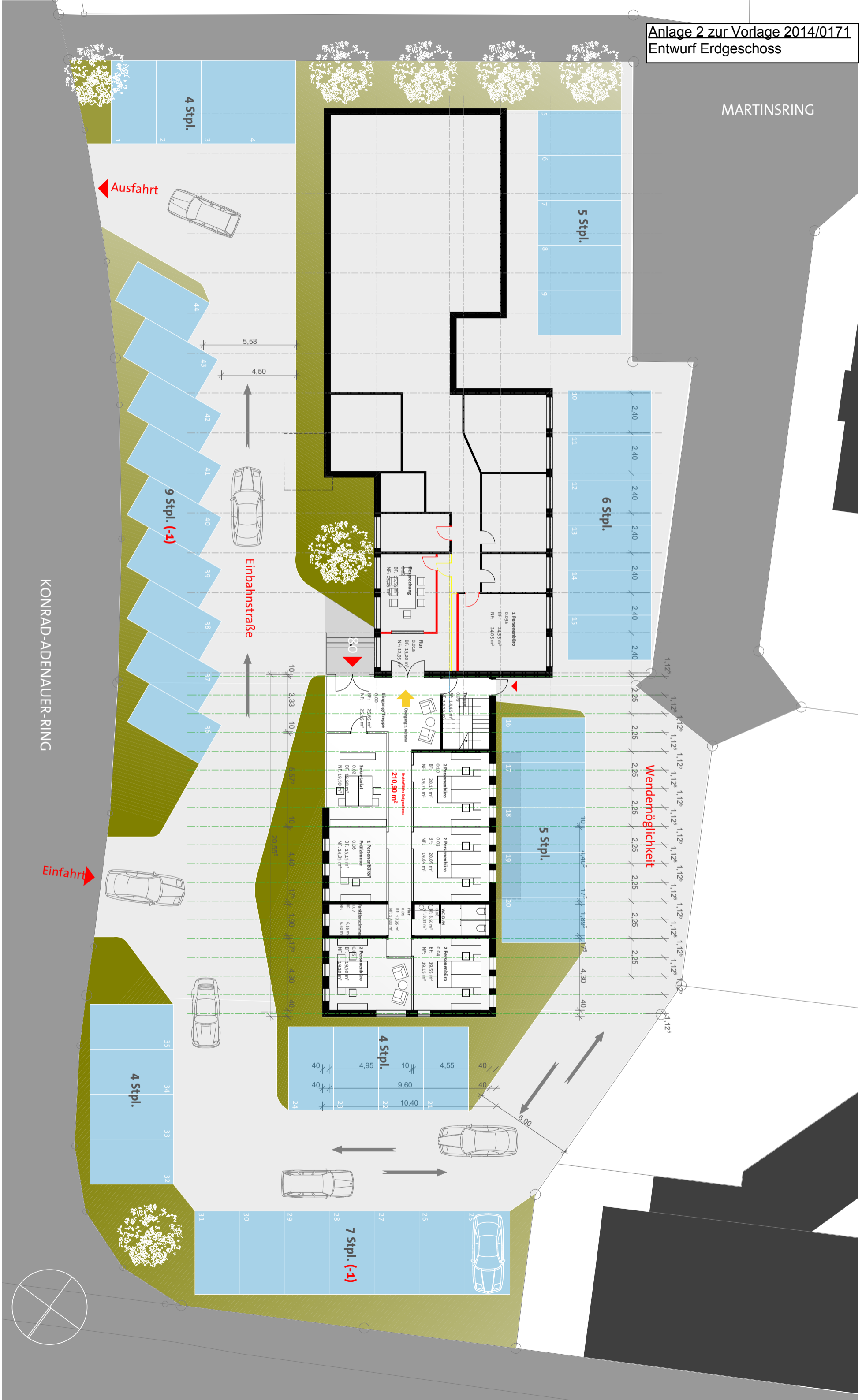


MARTINSRING

KONRAD-ADENAUER-RING



4 Stpl.

5 Stpl.

6 Stpl.

9 Stpl. (-1)

5 Stpl.

4 Stpl.

4 Stpl.

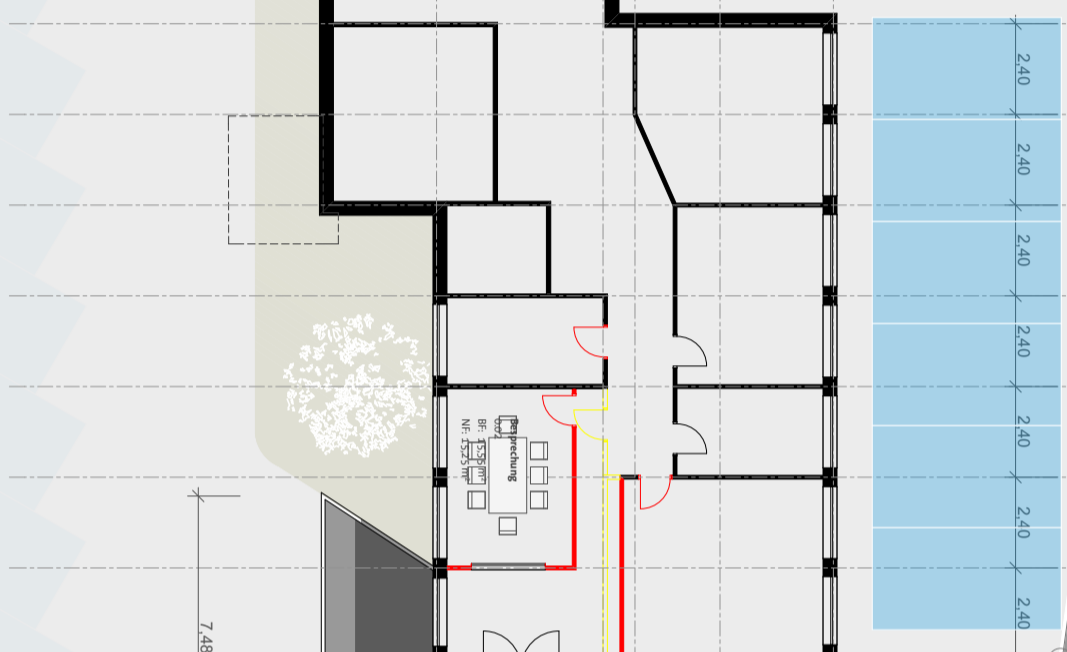
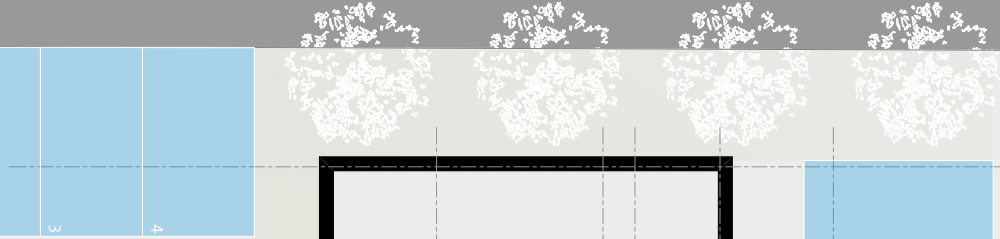
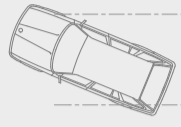
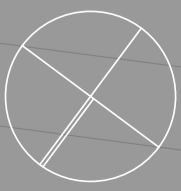
7 Stpl. (-1)

MARTINSRING

KONRAD-ADENAUER-RING

Ausfahrt

Einfahrt



7,48

17,67

10,40

20,33

Grundriss 1. Obergeschoss V5a M 1:200

Frölich · Habrock & Partner

03.06.2014

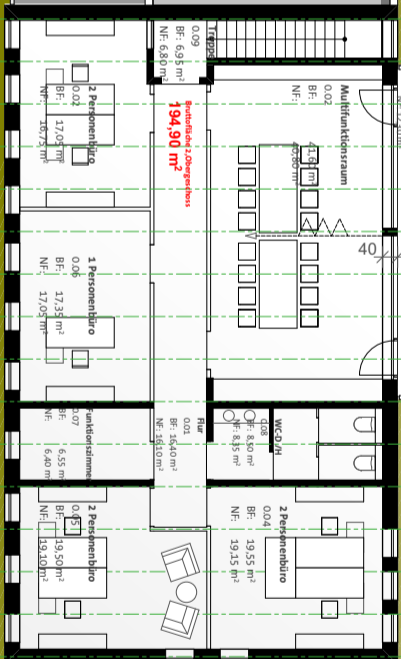
MARTINSRING

KONRAD-ADENAUER-RING

BESTAND / Dachaufsicht

Ausfahrt

Einfahrt



7,52

17,44

10,40

